



20

23

CENTER FOR HOPE  
**GRATITUDE REPORT**

A LIFE BRIDGE HEALTH GROUP



**CENTER FOR HOPE**

# OUR MISSION

Center for Hope advances hope, healing and resilience for those impacted by trauma, abuse and violence through comprehensive response, treatment, education and prevention.



## Table of Contents

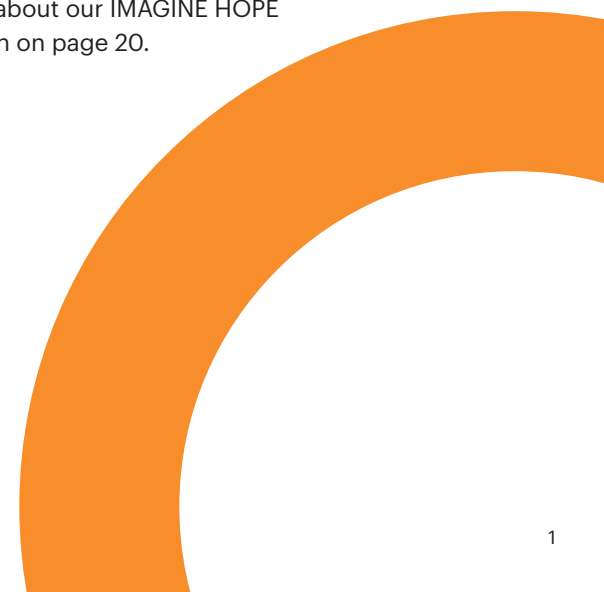
Introduction .....	2
Building Hope .....	4
Celebrations and Accomplishments .....	6
FY23 Highlights .....	14
Keeping Kids and Families Safe .....	15
Creating a United Approach to Community Violence Intervention .....	16
Addressing Interpersonal Violence Across the Lifespan .....	18
Advocating Against Violence .....	19
IMAGINE HOPE .....	20
Be A Hero .....	22
How We are Funded .....	23
Advisory Council, Leadership and Partners .....	25
Annual Honor Roll of Donors .....	27

### Success Starts with a Dream

by Jemicy School Students and Staff  
(Sean Tonkin, Lisa Needle, Javon Byam, Kati James)

**Artwork displayed throughout this Gratitude Report adorns the walls at Jill Fox Center for Hope, symbolizing hope and healing.**

Learn more about our IMAGINE HOPE art collection on page 20.



JILL FOX CENTER FOR HOPE

# Bringing Hope to Baltimore Communities

## Hope matters.

Center for Hope was created as a hub for hope for survivors of traumatic violence to provide the opportunity, the tools and the chance for a different way forward and a better tomorrow.

Spring 2022 saw the opening of our new organizational headquarters named Jill Fox Center for Hope. This new, 32,000-square-foot, state-of-the-art advocacy center was named in memory of Jill Fox and in recognition of the longtime support from the Jill Fox Memorial Fund, Inc., a supporting foundation of The Associated: Jewish Community Foundation of Baltimore, Inc. Now in one central and accessible location, community members, survivors of violence and team partners can access advocacy, support and resources for child abuse, human trafficking, domestic violence, community gun violence and elder abuse.

Center for Hope operates a community violence ecosystem, and serves as the access point to advanced crisis care for over 20,000 children, adults and community members each year. Some survivors first receive care before discharge at Grace Medical Center and Sinai Hospital, through our hospital intervention responder sites. Many of Center for Hope's 120 team members step in to provide round-the-clock services to survivors of violence, often within their hour of need. Community members turn to us after traumatizing domestic violence incidents or after they discover their children are abused. Neighborhood leaders rely on us as national experts on providing solutions to community gun violence or child protection. No matter what door they enter, they are connected to care, to services, to resources, and most importantly, to optimism and hope.

Hope is scientifically proven to create positive outcomes. Center for Hope's new home at the Jill Fox Center for Hope is built for growth, enabling the continual evolution and adaptation of methods and programs to generate positive outcomes for individual survivors and for the community at large.

## HOW WE HELP

# Our Programs

### Child Abuse, Exploitation and Human Trafficking

Baltimore City Regional  
Human Trafficking Navigation  
Child Advocacy Center  
Medical Care  
Mental Health Therapy

### Domestic, Family and Interpersonal Violence

DOVE at Northwest Hospital  
Elder Justice Center  
Sinai Hospital Domestic Violence  
Response Team

### Community Violence Intervention

Hospital Violence Response Teams

- Grace Medical Center
- Sinai Hospital

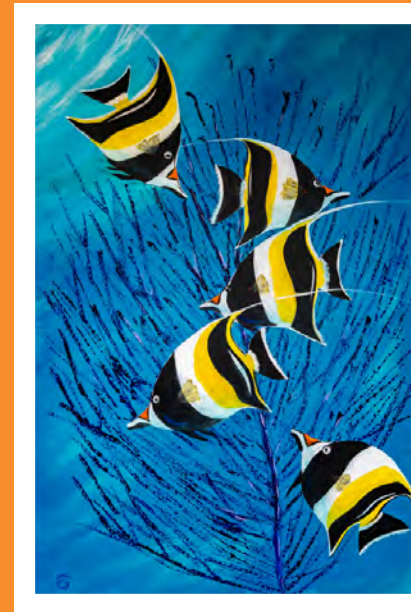
PAAVE (Pathways to Advocacy Against Violence Every day)

Safe Streets Baltimore community sites:

- Belair-Edison
- Belvedere
- Franklin Square
- McElderry Park
- Park Heights
- Woodbourne-McCabe

### Community Training

Community Outreach and Education  
Forensic Interview Research and Education (FIRE)  
[forensicinterview.org](http://forensicinterview.org)  
ReportAbuseMD.com – online training for mandated reporters of abuse



Angelfish in Coral  
by Edith Sunderland



# Building Hope



## Dear Hope Builder,

Center for Hope has become a national model for how to implement programs, services and support to best respond to and treat all forms of violence over the lifespan. No one in the country is doing the work we are doing, the way we are doing it. Creating a comprehensive violence and intervention program for the greater community, in conjunction with a large health system, is the culmination of years of work, and we could not be more enthusiastic for what lies ahead as we continue to grow our partnerships and make progress for those we serve.

Beyond the very exciting opening of the Jill Fox Center for Hope building in 2022, we also expanded our Safe Streets operation to six locations, started a hospital violence intervention team at Grace Medical Center, held an art opening for our IMAGINE HOPE collection, and launched our new online hub for our Forensic Interview Research and Education program. You can read more about our achievements in this report. Looking toward the future, one area of focus will be to use the success of our child abuse advocacy model to improve support for our elder population to prevent elder abuse.

As a health system, we are dedicated to addressing community violence as a public health issue. It takes all of us — survivors, caregivers, partners, team members and communities — to work together to build pathways towards hopeful tomorrows.

Together we can be a beacon of support, hope, resiliency and healing for all those who need help in recovering and rebuilding. Thank you for being part of this journey with us.

With gratitude and hope,

**Neil M. Meltzer**  
President and CEO,  
LifeBridge Health

**Adam Rosenberg**  
Executive Director,  
Center for Hope  
  
Vice President,  
LifeBridge Health, Violence  
Intervention and Prevention

**Jason White**  
Advisory Council Chair,  
Center for Hope



## Dear Hope Supporter,

We have been working in the new Jill Fox Center for Hope building for over a year now. It's the culmination of the efforts of so many to build a space that brings together all of our violence and trauma intervention and prevention services and programs under one roof. It's been a year of growth and our journey continues as we work to help survivors of trauma and abuse in ways that are most impactful for them.

In the years ahead, we will continue our dedication to aiding survivors of child abuse, domestic violence, elder abuse and community violence, while finding new ways to listen and learn from them about how we can do more. Members of our multidisciplinary teams consult with one another in real time to improve collaboration and outcomes. Additionally, we're fortunate to be connected to Sinai Hospital, on the same campus, sharing resources and best practices, joining forces to support our clients and learning from each other. We've already seen a difference having a central hub can make, in the short time since we opened the doors to our new facility, and are looking forward to making more of an impact for our clients and staff as we continue to grow.

Being located in the heart of the community we serve enables a more impactful relationship with our neighbors. We're having conversations, hosting meetings and providing trainings with our community neighbors and partners. We're not only supporting individuals but striving to meet with, connect to and serve the larger community.

Here's to the next year and beyond as we continue to share hope with our communities!

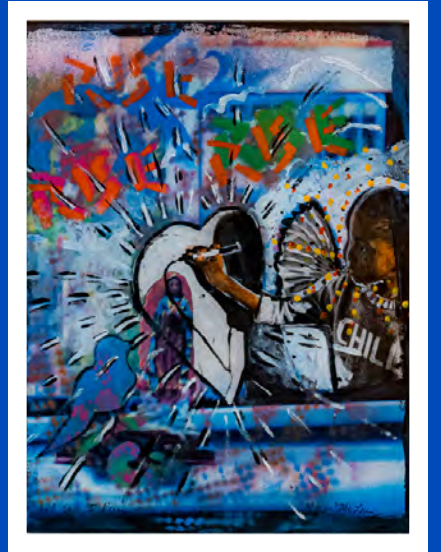
The Team at Center for Hope



Team members celebrate the opening of the Jill Fox Center for Hope.

# CELEBRATIONS

## and Accomplishments



**And Still I Rise**  
by Marla McLean

### Building Hope

Interpersonal and intracommunity violence affects so many people and leaves lasting impacts on our communities. To best support the growing need in Baltimore for a community resource in response to these public health challenges, LifeBridge Health committed to building the Jill Fox Center for Hope.



### A Community of Support

Within the walls of the Jill Fox Center for Hope building, team members provide a unique ecosystem where comprehensive programs, experts and city agency partners foster positivity, safety and success for children, youth and adults. The first program of its kind in the nation, Center for Hope works together with our community partners as we lean into the challenges we face and provide space for healing to those impacted by trauma-related violence, creating a safer Baltimore for survivors of all races, ethnicities and religions, from the cradle to old age.

NOVEMBER 13, 2020

### Groundbreaking Ceremony

LifeBridge Health officially launched Center for Hope, the first comprehensive violence intervention and prevention center in the nation that is part of a large regional health system. A socially distanced groundbreaking ceremony marked the start of construction for the facility, the first on Sinai Hospital's expanded campus located adjacent to Pimlico Race Course.

"This comprehensive violence intervention center brings together LifeBridge Health services around child abuse, domestic abuse and elder abuse along with community violence prevention programs, including a new Safe Streets site," remarked Neil Meltzer, president and CEO of LifeBridge Health. "We are bringing these services together to provide a safe haven for individuals of all ages who have been traumatized and are in need of help and resources as they begin their journey of healing."



Above: Del. Sandy Rosenberg, LifeBridge Health President and CEO Neil Meltzer, former board chair Brian Moffet, advisory board member T'keyah Jackson and LifeBridge Health Vice President of Violence Intervention and Prevention and Center for Hope Executive Director Adam Rosenberg break ground on the Center for Hope.

Right: Assistant Vice President, Strategy and Operations, Violence Intervention and Prevention LaDonna Morgan and former board chair Jen Sachs add a symbolic butterfly to the final beam at the Jill Fox Center for Hope.

JULY 30, 2021

### Beam Topping Ceremony

When the last beam was added to the Center for Hope building, the milestone was marked by a topping ceremony hosted by our construction firm DPR. Team members from LifeBridge Health and the construction crew signed the beams and attended the event.



MAY 2, 2022

### Capital Campaign Donor Reception

Donors toured the facility and celebrated the anticipated opening at a special reception.



LifeBridge Health President and CEO Neil Meltzer, second from right, joins Andrew Levine, Jon Davidov and Julie Levine in celebrating the opening of Center for Hope.

MAY 4, 2022

## Jill Fox Center for Hope Ribbon Cutting Event

Jill Fox Center for Hope officially opened with a ribbon cutting event attended by many in the community including LifeBridge Health leadership, elected officials, community leaders, friends of Center for Hope, members of the Jill Fox family and foundation and, of course, Manny, the Center for Hope facility dog.

The event celebrated the culmination of several years of planning for the state-of-the-art facility, accommodating the only comprehensive violence intervention and prevention center in the region, bringing various Center for Hope programs under one roof.

"The building was designed from the ground up to be client focused with the intention of advancing hope, healing and resilience for those impacted by trauma, abuse and violence through comprehensive response, treatment, education and prevention," said Adam Rosenberg, LifeBridge Health vice president of Violence Intervention and Prevention and executive director of Center for Hope.

## Honoring Jill Fox

The building was named in honor of Jill Fox, a 19-year-old college student who died from an unexpected illness in 1960. The dedication was made possible by two significant gifts — one from the Jill Fox Memorial Fund Inc., a supporting foundation of The Associated: Jewish Community Federation of Baltimore Inc., and the other an endowed gift from Jill's family, Shirley F. Scholder, Karen L. Scholder, Susan Scholder Smith and David M. Scholder, in memory of Jill and Shirley's parents, Louis and Dorothy Fox. The endowed gift established the Dorothy N. and Louis J. Fox Client Assistance Endowment Fund to provide therapeutic mental health services, support groups, critical basic living needs and program supplies for Center for Hope clients and survivors of violence.



Shirley Scholder, sister of the late Jill Fox for whom the building is named, cuts the ribbon at Center for Hope with community members, family members and LifeBridge Health leadership.



Center for Hope Advisory Council members celebrate the building's opening.

MAY 5, 2022

## Prayer Breakfast

Reverend Rashad Singletary of Mt. Olive Baptist Church of Turner Station leads an audience of 90 religious and faith leaders in prayer at the opening of Center for Hope.



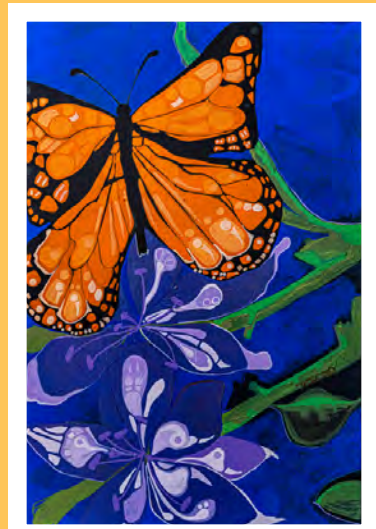
MAY 15, 2022

## Community Block Party

Following the building's official opening, Center for Hope hosted a Community Block Party, inviting the greater Baltimore community to join in the celebration. A festive afternoon of dancing, music, interactive games, fun food and giveaways marked the official welcoming for Center for Hope to the Park Heights community. Visitors toured the new building and enjoyed an afternoon of fun with the team.



Baltimore City cheer team celebrates at our Community Block Party.



**Returning to My Creator**  
by Romando Alexis Escalona



**Black Lines 1x**  
by Sue Ousterhout

JUNE 2022

## Bloomberg American Health Initiative

Center for Hope joined the Bloomberg American Health Initiative as a collaborating organization and welcomed fellow Dr. Farheen Qurashi, who is focused on the public health issue of violence, specifically gun violence, interpersonal violence, abuse and neglect, and the need to intensify prevention efforts. As a full-time trauma surgeon at Sinai Hospital, Dr. Qurashi sees the impact of gun violence and interpersonal and street violence on a daily basis. Through research and advocacy efforts, her fellowship focuses on communication and process development for clients affected by multiple forms of violence. In December 2022, Center for Hope Executive Director Adam Rosenberg and Dr. Qurashi attended the Bloomberg American Health Summit, held in Philadelphia, that brought hundreds of practitioners, policymakers and experts together to highlight how local public health efforts are shaping national policies and solutions.



AUGUST 2022

## Thailand Delegation Visit

A delegation from Thailand visited the Jill Fox Center for Hope building to learn more about child advocacy centers and Center for Hope's forensic interview process, which has garnered international acclaim as a leader among community violence and child advocacy centers. A group of 10 Thai public prosecutors, accompanied by the FBI legal attaché for Thailand, Laos and Myanmar, enjoyed a presentation by Forensic Interview, Anti-Trafficking and Forensic Interview Research and Education (FIRE) team members followed by a question-and-answer session with Center for Hope leadership and a tour of the new building. In appreciation, Thailand's Office of the Attorney General gifted a piece of original art to add to the IMAGINE HOPE collection that decorates the building.

SEPTEMBER 2022

## Safe Streets

To centralize core anti-violence programs, Baltimore City announced the transfer of administration of 10 locations of its violence intervention program, Safe Streets, to LifeBridge Health and Catholic Charities in September. A total of six locations now operate under LifeBridge Health's Center for Hope.

Center for Hope, which already operated the Belvedere and Woodbourne-McCabe Safe Streets sites, added the Belair-Edison and McElderry Park sites in October, and assumed administration of the Franklin Square and Park Heights sites in January. The transfer of administration is a component of Baltimore City's Community Violence Intervention (CVI) Ecosystem, created to incorporate trauma-informed, community-centered and evidence-based public health interventions to stem the tide of violence.



Safe Streets team members work with elementary school students to reduce community violence.

OCTOBER 12, 2022

## IMAGINE HOPE Art Opening

More than 140 pieces of art comprise the IMAGINE HOPE Art Collection, on display throughout the building to evoke a sense of peace, hope and healing. Many of the contributing artists attended a reception at the Jill Fox Center for Hope celebrating them and thanking them for their gift of art. The event allowed them the opportunity to see the impact of their artwork on clients, staff and visitors to Center for Hope. **Please see story, on page 20.**



DECEMBER 8, 2022

## Community Violence Intervention Collaborative (CVIC)

Center for Hope partnered with the White House's Community Violence Intervention Collaborative (CVIC), joining community safety leaders from across the country to celebrate efforts promoting long-term, holistic public safety and work together to ensure long-term growth in violence intervention. The collaboration aims to elevate the programmatic, organizational and administrative capacity of grassroots community violence intervention organizations, like Center for Hope, increase access to new federal funding streams to scale efforts and ultimately reduce gun violence and improve community wellbeing in 16 key U.S. jurisdictions.



OCTOBER 20 – 21, 2022

## Urban Forum

Center for Hope hosted the 10th-annual Urban Forum of the National Children's Alliance. This gathering of leaders from over 30 large city child advocacy centers met for two days to share ideas and best practices.



### Where the Blue Rocks Meet

by Leslie Thornton

"I am honored to be supporting Center for Hope and the amazing healing that will take place here. My wish is for visitors to find light and joy in this piece and their journey."

JANUARY 1, 2023

## The Family Tree

The Family Tree, a 50-year-old, nationally recognized leader in child abuse prevention, became an affiliate of LifeBridge Health, and works closely with Center for Hope's team to deploy effective family strengthening and child maltreatment prevention strategies that break the patterns of violence and support families and child well-being throughout LifeBridge Health practices and across the life cycle.



Marking The Family Tree's affiliation with LifeBridge Health are Pat Cronin, recently retired executive director of The Family Tree; Neil Meltzer, LifeBridge Health president and CEO; Tom Peltier, president of The Family Tree board of directors; Brian Moffet, past chairman of the LifeBridge Health board of directors; and Adam Rosenberg, LifeBridge Health vice president of Violence Intervention and Prevention.

FEBRUARY 2023

## FIRE Team Training in Mongolia

After a summer 2022 visit, Center for Hope extended its international reach to Mongolia. The FIRE team provided a two-week training on trauma-informed practices for investigations of crimes such as human trafficking for a coalition in Mongolia. The team adapted its Forensic Interview Toolbox (FIT) training and materials for nearly 20 Mongolian prosecutors, investigators and victim advocates, providing history, theory and research behind the model as well as practical skills that participants could immediately implement in their daily work. The training was delivered virtually from 7:30 p.m. to 12:30 a.m., to accommodate the 11-hour time-zone difference.

APRIL 30, 2023

## Be A Hero Gala

Be A Hero gala, a musically dynamic evening held at Union Craft Brewing in Baltimore, raised friends and support for Center for Hope's comprehensive violence prevention and intervention programs. **Read more on page 22.**

JUNE 8, 2023

## Center for Hope Launches FIRE Landing Page

Center for Hope launches the new landing page for the Forensic Interview Research and Education (FIRE) program. This nationally accredited training has been requested in Maryland, the United States and even across the globe. The team pioneered the use of tele-forensic interviewing during the COVID pandemic and continues to better the victim services field by helping train interviewers who can obtain the most accurate information. At a launch party in June 2023, the FIRE program recognized and thanked some of its champion supporters and gave a preview of our new website [www.forensicinterview.org](http://www.forensicinterview.org).



Crimson Barocca, FIRE manager, recognizes Rob Daniels, Center for Hope Advisory Council member and FIRE faculty member, for his contributions at the web launch.





# FY23 Highlights

CENTER FOR HOPE **5,935** CLIENTS SUPPORTED

<p><b>FAMILY ADVOCACY</b></p> <p><b>562</b> families supported</p>	<p><b>FORENSIC INTERVIEWS</b></p> <p><b>483</b> interviews of children and survivors of abuse, exploitation and witness to violence</p>	<p><b>SAFE STREETS</b></p> <p><b>902</b> mediations that prevented violence</p>	<p><b>HOSPITAL-BASED VIOLENCE RESPONSE (SINAI AND GRACE)</b></p> <p><b>591</b> patients</p>
<p><b>ANTI-TRAFFICKING AND EXPLOITATION</b></p> <p><b>129</b> client outreach attempts</p> <p><b>80</b> clients supported</p> <p><b>56</b> clients received specialized resources such as food, clothing and shelter</p> <p><b>17</b> missing youth referrals made</p>	<p><b>PATHWAYS TO ADVOCACY AGAINST VIOLENCE EVERY DAY</b></p> <p><b>33</b> community events</p> <p><b>55</b> referrals for children who experienced homicides and shootings</p>	<p><b>216</b> community events</p> <p><b>MEDICAL</b></p> <p><b>583</b> medical examinations conducted for children at risk of maltreatment and abuse</p>	<p><b>573</b> bedside visits</p> <p><b>669</b> advocacies with medical teams</p> <p><b>1,297</b> phone calls</p>
<p><b>COMMUNITY OUTREACH AND EDUCATION/FIRE</b></p> <p><b>43</b> trainings reached</p> <p><b>12,284</b> professionals</p>	<p><b>DOVE AT NORTHWEST HOSPITAL</b></p> <p><b>1,705</b> new referrals</p> <p><b>89</b> bedside visits</p> <p><b>1,472</b> legal services</p> <p><b>2,814</b> survivors of domestic abuse supported</p> <p><b>182</b> nights in shelter provided</p>	<p><b>MENTAL HEALTH THERAPY</b></p> <p><b>197</b> mental health therapy clients</p> <p><b>3,924</b> sessions (2,647 sessions from mental health therapy providers and 1,277 sessions from DOVE)</p>	

## Keeping Kids and Families Safe

When children have been impacted by violent trauma, lifelong repercussions can result. Physical and sexual abuse, exposure to gun violence, internet exploitation, trafficking and living with domestic violence are all adverse experiences that greatly affect children as they grow into adulthood. As the third-oldest nationally accredited child advocacy center in the nation and the first in Maryland, Center for Hope's Child Advocacy Center, formerly known as the Baltimore Child Abuse Center, employs a team of forensic interviewers, family advocates, child care specialists, anti-trafficking specialists and medical experts to work with law enforcement, child protective services and prosecutors. Our multi-disciplinary teams work collaboratively with families in a trauma-informed manner to address the reported experiences and witnessing of violence.

From the moment a child walks into the center, our team of experts is there to help ease their journey toward healing. Child advocates and Manny the therapy dog work with each child to help decrease anxiety and increase a sense of safety. Specially trained forensic interviewers meet one-on-one with children in a trauma-sensitive environment. Medical staff provide exams to document physical evidence of abuse.

Family advocates assist families with connections to needed resources such as mental health services, clothing, groceries, transportation and emergency shelter.

A survivor's healing journey continues long after the initial event. The mental health program at Center for Hope provides caregivers and survivors with therapy services so they have a safe space to process what has happened to them. Trauma-focused, evidence-based outpatient psychotherapeutic services are available to clients recovering from traumatic life experiences, as young as three years-old.

### The Florez\* Family

After an allegation of child abuse was reported, the Florez family came to Jill Fox Center for Hope for a forensic interview. During their visit, a family advocate discovered that they had no housing to return to and no support system to help them. Center for Hope was able to connect the family, a mother and four children, with funds for a short hotel stay while they sought a more permanent housing solution. But the family also had two other very important members who need temporary shelter—two dogs. Thankfully, Center for Hope team members facilitated a foster situation at a local shelter, and the family found housing with a cousin. Knowing that all of their family members were safe while they got the help they needed allowed them to move forward in their healing journey.

### The Gates\* family

The mental health program at Center for Hope provides trauma-focused, evidence-based outpatient psychotherapeutic services to Baltimore City residents recovering from traumatic life experiences across the lifespan, as young as three years-old. Members of the Gates family had been attending therapy for a few months when it was discovered that the family was struggling to pay rent and utilities due to an abusive living situation. We advocated for the family and were able to secure nearly \$4,300 for rent and utilities assistance through the Sexually Abused Children's Relief Endeavor (SACRED) fund. Violence and abuse disrupt every part of a family's life. At Center for Hope, we are committed to comprehensively meeting clients' needs so that they can achieve the best, most resilient outcome.



\*All client names have been changed for privacy throughout this report

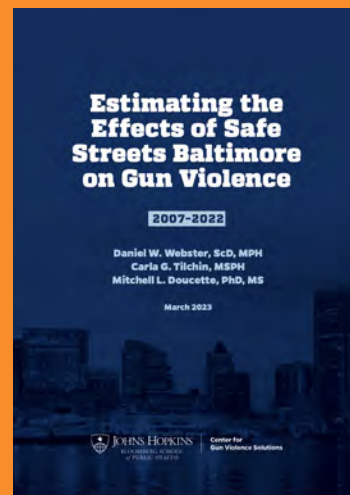
# CREATING A UNITED APPROACH TO Community Violence Intervention

Expanding on the Baltimore City Comprehensive Violence Prevention Plan and initiatives from the White House and national violence intervention partners, Center for Hope has developed a unique approach to community violence intervention.

Center for Hope prioritizes taking action to support communities through funding, activism and policy change to create systematic change and support for trauma survivors, their family members and the community at large. An increased investment in workers, improved oversight and access to critical wraparound services supports the goal of reducing violence-related trauma in Baltimore.

The interconnected programs at Center for Hope provide various entry points for survivors and family members impacted by community violence. The Emergency Departments at Grace Medical Center and Sinai Hospital serve as hospital responder sites, offering comprehensive violence intervention services at the bedside of those impacted by violence. Trained violence responders provide access for patients and family members to needed resources to improve their health and well-being, lessen the impact of trauma and decrease the likelihood of recurrence.

With Baltimore's restructuring of its Safe Streets program, LifeBridge Health's Center for Hope took on the operation of additional sites. Center for Hope now administers six total sites, working to prevent gun violence in six targeted neighborhoods. A team of trained violence interrupters works to prevent violence by identifying and detecting individuals and groups at highest risk of involvement in a shooting or killing. The teams interrupt potential violence by mediating conflicts and preventing retaliation, offering alternatives for those at highest risk of involvement in an escalating conflict and using data to inform daily efforts and make necessary changes to interruption strategies.



“Estimating the Effects of Safe Streets Baltimore on Gun Violence,” a March 2023 study released by the Johns Hopkins Bloomberg School of Public Health, concludes that

**Safe Streets spurred a 23% reduction in nonfatal shootings.**

Several programs operate for youth in conjunction with Safe Streets. Pathways to Advocacy Against Violence Every day (PAAVE) provides trauma-sensitive, evidence-based, intensive case management and meaningful referrals for youth and family members impacted by a homicide or other forms of violence. The Kujichagulia (Kuji) Program, an after-school youth engagement program, fosters and strengthens professional, creative and critical thinking skills with a goal of teaching youth to use multi-media platforms to share their voices and be engaged as changemakers. DIVAS (Developing Inner Values to Acquire Success) mentors young women who have experienced trauma in their lives, and the Coach Program integrates trauma-informed support services for youth and coaches in Baltimore.

## Malik\*

Surviving homicide at any age requires significant support. Pathways to Advocacy Against Violence Every day (PAAVE) identifies the immediate and long-term needs of clients and their entire family unit who have experienced the homicide of a loved one. Malik's family was referred to PAAVE program after a devastating life event — his mother had been murdered. PAAVE connected Malik and his siblings with experienced mental health professionals to help them process their emotional trauma. They were also connected with a PAAVE case manager who provided assistance in finding a new home and partnered with the hospital response team at Grace Medical Center to provide food, clothes and shoes. Later, when Malik's father was approved for a new home, their case manager also connected them with resources for children's beds, dishware, a washer and a dryer.

## Natasha\*

DIVAS is a support group for young women, 12 to 16 years old, who have experienced some type of trauma in their lives. The goal of the DIVAS program is to assist young women in identifying their life goals and preparing them to attain those goals. Coming from a trauma situation, many participants have trust issues. Center for Hope creates a safe environment for these young women to share their thoughts and feelings,

and our team connects them with mental health services when needed. One participant, Natasha, was able to share her concerns around self-image and self-esteem. Through DIVAS and working one-on-one with a therapist, Natasha was able to find closure for a situation she had experienced and move forward. The support Center for Hope provided enabled her to be successful in school and achieve her academic goals with no distractions. DIVAS has a 99% retention rate, and Natasha, like other alumni, go on to thrive in life, “better, brighter and stronger,” which is part of the DIVAS mantra.



## Education AND INNOVATION

Violence prevention starts with education. Center for Hope's Community Outreach and Education Department educates approximately 10,000 people annually through trainings on topics including healthy relationships and boundaries with children, adverse childhood experiences, responses to abuse and trauma, hope and resilience, trafficking and exploitation, intimate partner violence, grief, homicide and

more. Center for Hope's website [www.reportabusemd.com](http://www.reportabusemd.com) continues to educate thousands of mandated reporters, educators, teachers and professionals each year with our online training institute and educational video resources.

Our innovative Forensic Interview Research and Education (FIRE) Program gives those impacted by trauma a voice through uniting forensic interview research and practice. FIRE was founded to support communities of practice who conduct and utilize interviews with alleged victims for a range of legal and forensic contexts. FIRE provides trainings on forensic interview techniques based on our nationally approved forensic interview model, peer reviews to assist forensic interviewing professionals to adhere to best practice techniques, legal trainings that help professionals prepare to confidently testify in court as well as customizable education programs. In June 2023, we launched [www.forensicinterview.org](http://www.forensicinterview.org) to serve as a central resource for training, research and education.

# Addressing Interpersonal Violence

## ACROSS THE LIFESPAN

Center for Hope's DOVE Program at Northwest Hospital is among the first hospital-based domestic violence response programs developed in Maryland. The program helps those facing physical and emotional abuse in relationships, whether they are patients referred after police-involved incidents or self-referred members from northwest Baltimore County. The DOVE team provides 24/7 immediate crisis intervention, safety planning, supportive counseling, case management, legal support and referrals to other services.

Recognizing that about 1 in 10 Americans over age 60 are abused, neglected, financially exploited, Center for Hope started a team to foster elder justice. Using time-tested violence intervention and prevention approaches which our child advocacy and domestic violence programs have mastered, Center for Hope is providing a new approach to elder justice, creating outreach, intervention and prevention programs to enable elder community members to live safely with dignity and respect.

### Rose\*

Rose came to Center for Hope because her children had been victims of sexual abuse and exploitation. In addition to providing services for her children, Rose shared she was also struggling with domestic violence. The range of comprehensive violence intervention services offered at Center for Hope enabled an easy hand off to our domestic violence team to help her escape that crisis. The family received shelter, legal aid, courtroom support and mental health services. Along every step of the process, our family advocates and staff made sure Rose and her children felt comfortable and welcome. Rose shared with us, "While the reason for visiting Center for Hope was very traumatic, you and the staff made an unsettling life experience manageable."

### Bethany\*

In addition to helping child victims of abuse, Center for Hope also helps vulnerable elder adults. Sixty-two-year-old Bethany came in with her caregiver for a forensic interview, during which she became very upset and began yelling and crying, "It hurts!" After an examination, our medical team determined that she had been physically abused and remained emotionally disturbed. With the support of team members across our medical, forensic interview and family advocacy teams, Bethany eventually calmed down. She expressed her thanks to the team for listening and helping her, and also commented that the decorative waiting room helped her relax. Our team commended her for her bravery and assured her that she would be connected with a therapist. At Center for Hope, everything from our team members to our physical environment to the comprehensive services we provide is trauma-informed and client-centered so that people like Bethany can feel safe.

# ADVOCATING Against Violence

At Center for Hope, we advocate for those who need access to programs and services to help them recover from the traumatic effects of violence. Center for Hope enacts this commitment to effective, trauma-informed laws and policies with a dedicated legislative effort to share a message of hope with government leaders at the local, state and national levels.

Guns are the number one cause of death of young people in Maryland, much of which is from interpersonal violence. With the growth of gun violence in communities and schools, violence intervention programs are essential. Conflict resolution training prevents violence and encourages problem-solving for students and teachers.

Center for Hope works to make sure violence programs that serve youth and families are funded, and to help address a growing shortfall in federal Victims of Crime Act (VOCA) funding. Sustained VOCA funding allows us to continue to provide services and programs for underserved victims of violence, their family members and those at risk from victimization of domestic violence, child abuse and sexual assault.

For years, Center for Hope advocates have supported efforts to hold abusers — as well as the adults and institutions who let abusers continue to flourish — accountable. As a result of ongoing support from all over Maryland, the statute of limitations was lifted for survivors of child sex abuse. After years of work, the Child Victims Act of 2023 finally passed, freeing victims to file civil claims against their abusers and institutions at any time.

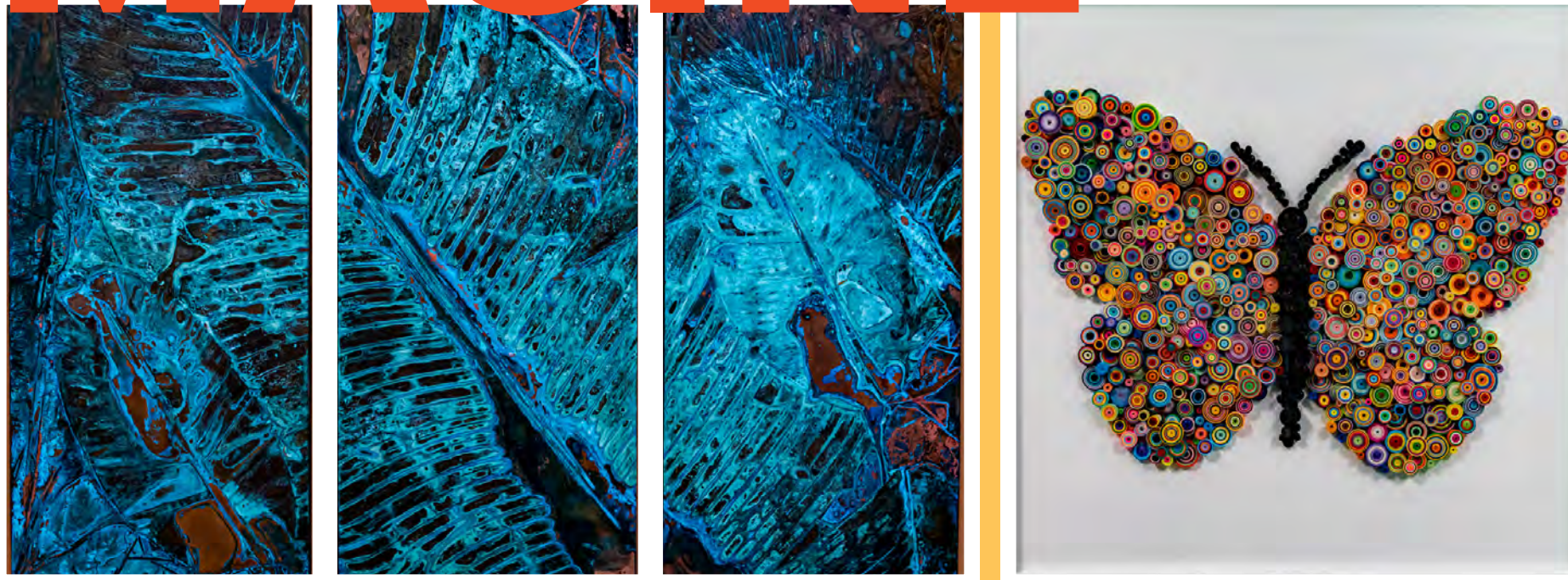
Center for Hope will continue to advocate for victims of trauma and communities, with the goal of reducing the incidence of violence in Baltimore, the state and the country.



## The Red Desk Project

In honor of National Child Abuse Prevention Month, LifeBridge Health launched the Red Desk Project, a functional public art campaign aimed at raising awareness and funding to address child homicide in Baltimore. Now, in its third year, the Red Desk Project features more than 100 student desks painted in red representing each child slain in Baltimore as a result of child abuse or gun violence since 2016. The desks have been displayed outside of the Jill Fox Center for Hope and at Sinai Hospital during April and May of each year. The hope is that the Red Desk Project draws attention to the need to protect children from becoming victims of violence and homicide.

# IMAGINE



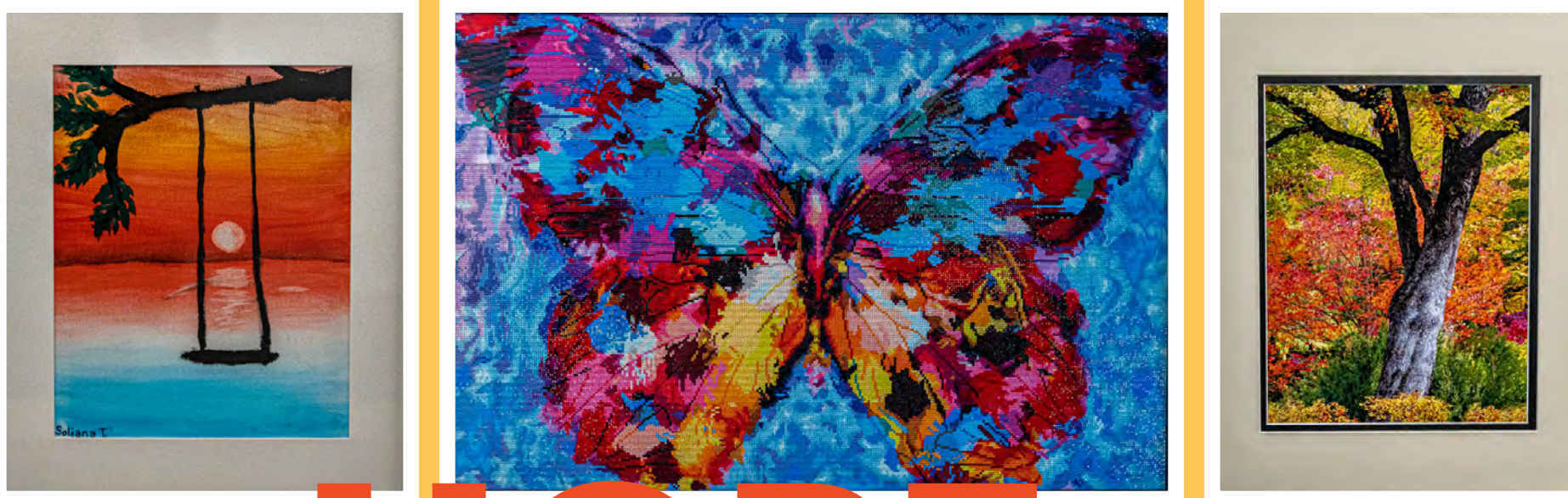
## Art Collection Inspires a Sense of Calm, Peace and Hope

Imagine a path to healing that gathers seasoned and compassionate experts to guide those in need. Imagine a place where the experts work to provide healing, promote resilience and advance courage and faith. Imagine healing through artistic diversity showcasing creative talents that help inspire, soothe and heal those who have experienced trauma. IMAGINE HOPE.

IMAGINE HOPE is a collection of artwork, created to beautify the walls of the Jill Fox Center for Hope and provide a cathartic environment for those who are struggling, whether as a witness to homicide, domestic violence or community violence, a survivor of abuse or a team member. Art inspires hope through positive imagery and provides a connection for clients.

The Jill Fox Center for Hope showcases 140 pieces of donated art from a diverse group of more than 90 amateur and professional artists located in Maryland, Virginia, New York, Pennsylvania and even Japan. Several artists revealed that they, too, are survivors; commissioning these works provided a sense of calming for them, leading them on a path of healing, just as it does for those who visit Center for Hope.

The cornerstone piece and others throughout the collection feature a butterfly, a symbol of growth and change. The HOPE is that the collection provides light and guidance for the children, teens, families and caregivers who appear at Center for Hope in their darkest hours.



# HOPE

The IMAGINE HOPE collection showcases the outpouring of support, love and creativity from artists across the country to support the road to healing. The collection was compiled into a book published in 2022.

From left: **Banana Leaf triptic #9714**, Cathy G. Vaughn; **Free To Be...**, Community of Baltimore and Beyond; **Midnight Swing**, Soliana Thompson; **Butterfly of Paradise designed by Yuri**, Diamond Art by Evelyn Benitez-Sorto; **Fall Foliage**, Steve Sattler

# Be A Hero

We are grateful to the friends and supporters of Center for Hope who came to our reimagined Be A Hero event — it was a huge success!

More than 700 guests rocked the night away on Saturday, April 29, 2023, at Union Craft Brewing in Baltimore. The evening began with entertainment by the popular Maryland-based Psycho Killers and continued with dinner and an acoustic performance by Cris Jacobs. Everyone enjoyed the evening that raised \$515,000 for Center for Hope. There could not have been a more musically dynamic evening to celebrate the violence intervention and prevention programs at LifeBridge Health's Center for Hope.

Thanks to everyone who attended the event, and a special shout out to our Be A Hero Committee Chairs: Adele and Michael Greenebaum and their hard-working committee Rob Daniels, Lindsey Foster, Laurie Haas, Mande Heinl, Jamie Smith and Bridget Stickline.

We are grateful to all of our generous sponsors including our Diamond Record sponsor the Greenebaum Family Foundation; Platinum Record sponsor ProMD Health; Gold Record sponsors Buch Construction, Edward St. John Foundation and Genine M. and Josh E. Fidler and Family; and our Headliner sponsors MaxSent, Iron Bow Technologies, Network Ninja and Storyfarm.



Ellen Meltzer, second from left, and Neil Meltzer, LifeBridge Health president and CEO, second from right, with guests at the Be A Hero fundraising event.



Jon and Robin Davidov, Mark and Stephani Renbaum and Sandi and Brian Moffet, past LifeBridge Health board chair, celebrate.



Event chairs Adele and Michael Greenebaum join Adam Rosenberg, executive director of Center for Hope, far right.



Center for Hope staff rocks out at Be A Hero 2023.

# How We are Funded

FY2023  
Raised \$8.3 million

FY2022  
Raised \$7 million



<b>Individual</b>	8.38%	\$696,885
<b>Foundations</b>	8.56%	\$711,580
<b>Fee for Service</b>	4.7%	\$390,625
<b>Government Grants</b>	78.37%	\$6,518,609

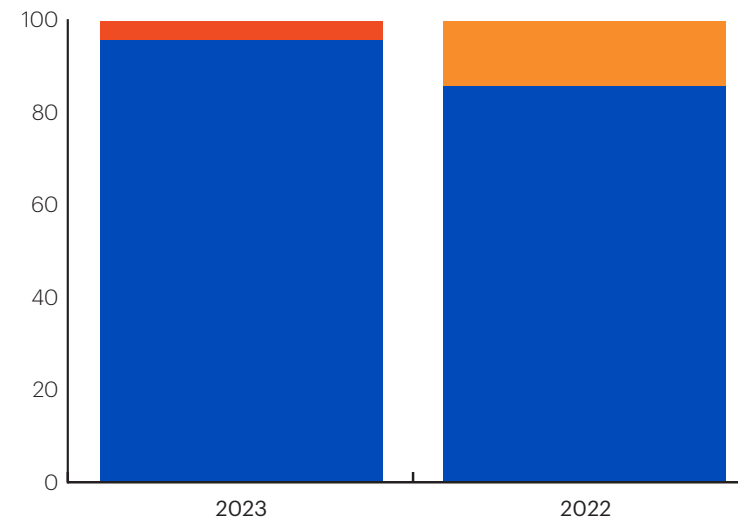


<b>Individual</b>	16.92%	\$1,195,995
<b>Foundations</b>	13.18%	\$931,677
<b>Fee for Service</b>	3%	\$211,926
<b>Government Grants</b>	66.9%	\$4,729,538

\*FY22 revenue excludes \$3.5m raised for Capital Campaign

REVENUE

EXPENSES



FY2023  
**Operating Expenses** 4%  
**Program Expenses** 96%

FY2022  
**Operating Expenses** 14%  
**Program Expenses** 86%

# Capital Campaign Donors

The individuals, foundations, organizations and other partners recognized on this list are the generous benefactors who made gifts of \$1,000 and above in support of building the Jill Fox Center for Hope.

## \$500,000 or More

Jill Fox Memorial Fund, Inc.,  
a supporting foundation of The Associated:  
Jewish Community Federation of Baltimore, Inc.

Shirley F. Scholder, Karen L. Scholder, Susan  
Scholder Smith and David M. Scholder

The Harry and Jeanette Weinberg Foundation

## \$250,000 - \$499,999

The Jacob and Hilda Blaustein Foundation

Josh E. and Genine Macks Fidler

France-Merrick Foundation

The Aaron and Lillie Straus Foundation

## \$100,000 - \$249,999

Abell Foundation

The Jack & Phyllis Finkelstein Family Foundation

Samuel G. & Margaret A. Gorn Foundation

In loving memory of Isabelle Loewenthal Krieger

Middendorf Foundation

## \$25,000 - \$99,999

The David and Barbara B. Hirschhorn Foundation

The Herbert Bearman Foundation

Mandee & Steven Hein/Taylor Foundation, Inc.

David, Jessie, Kelsey, Joe and Charlye Krajewski

In Honor of Audrey & Arthur Levine by their sons  
Michael, Charles and Andrew Levine

M&T Bank

Migliara Family Foundation

Todd Pattison and Family

The Herman & Walter Samuelson Foundation

## \$1,000 - \$24,999

Dr. Janet Allan

Arbor Dog Foundation

The Blavatt Family

In Memory of Ken Gerstley

Golfers Charitable Foundation

MBZ

ProMD Health

Carole Rosenberg and Family

Jennifer and Adam Rosenberg

St. John's Episcopal Church of Western Run

Jamie Smith and Christian Merlo

Bridget and Scott Stickline

Jason White and Jacqueline Diehm



**Elephants**  
by Nicole Samuel

# Advisory Council, Leadership and Partners

## Advisory Council

AS OF SEPTEMBER 1, 2023

### Jason White

Director, Project Management  
RE Management Services

### Bridget Stickline

Owner, WeeChic Boutique

### Hirsh Ament, Esq.

Partner, Venable LLP

### Rob Daniels

Assistant Attorney General, Maryland  
Office of the Attorney General

### Lindsey Foster

Attorney, Law Office of Lindsey B.  
Foster, LLC

### Carrie Freshour

Carrie Freshour Consulting

### Mandee Heini

Real Estate, Land Use, and Zoning  
Associate, Saul Ewing LLP

### T'keyah Jackson

Residential Program Manager,  
Catholic Charities

### Steve Johnson

President, Pimlico Terrace  
Neighborhood Association

### Tiffany July-Lindo

Development Officer, Baltimore  
Community Foundation

### Scott Melamed

President, ProMD Health

### Laura Neuman

Entrepreneur/Public Servant

### Emma Romero Holloway

Corporate Assistant Controller,  
MileOne Group

### Todd Pattison

CEO, MaxSent

### Jennifer Sachs

Educator

### John Sherman

CEO, Storyfarm

### Jamie Smith

Coordinator, Maryland Children's  
Alliance



## Center for Hope Leadership

### Adam Rosenberg, Esq.

Executive Director  
Vice President, LifeBridge Health,  
Violence Intervention and Prevention

### Freedom Jones

Director, Community Violence  
Intervention

### Kerry Hannan

Director, Child Advocacy and  
Elder Justice Center

### Wendy Lane, M.D.

Medical Director

### LaDonna Morgan

Assistant Vice President,  
Strategy and Operations,  
Violence Intervention and Prevention

### Yuvi Rattigan, LCSW-C, RPT

Director, Clinical Services

### LeeAnne Woods, Esq.

Director, Grants Management &  
Program Evaluation

**Butterfly Wishes**  
by Ellie Luchinsky

## Partners

Araminta Freedom Initiative

Baltimore City Department of Aging

Baltimore City Department of Health

Baltimore City Department of Social Services

Baltimore City Office of the State's Attorney

Baltimore County Child Protective Services

Baltimore County Department of Social Services – CAC

Baltimore County Police Department

Baltimore Police Department

Catholic Charities of Baltimore

CHANA

Child Fatality Review Team, Baltimore City

Child Justice

Coalition to Protect Maryland's Children

Comfort Cases

Domestic Violence Coordinating Committee-Baltimore County

Domestic Violence Fatality Review Team, Baltimore County

Erin Levitas Foundation

Family Crisis Center

Federal Bureau of Investigation (FBI)

GBMC

Governor's Office of Crime Prevention, Youth, and Victim Services

Homeland Security

House of Ruth

Lethality Assessment Project, Maryland Model

Maryland CHAMP

Maryland Children's Alliance

Maryland Department of Health, Center for Maternal and Child Health

Maryland Department of Human Services – Social Services Administration

Maryland Department of Juvenile Services

Maryland Human Trafficking Task Force

Maryland Violence Prevention Coalition

Mayor's Office of Neighborhood Safety & Engagement

National Children's Alliance

No Struggle No Success

Roberta's House

Social Services Family Violence Unit

TurnAround, Inc.

University of Maryland Medical Center, Department of Pediatrics, Divisions of Child Protection and Emergency Medicine

# ANNUAL HONOR ROLL OF DONORS

The Center for Hope annual contributor listing recognizes donors who have made gifts, pledges, payments and in-kind donations between July 1, 2021 and June 30, 2023. This encompasses support to all Center for Hope programs, including the Child Advocacy Center, DOVE program at Northwest Hospital, Elder Justice Center, Kujichagulia Center for youth development, six Safe Streets city-wide sites and the Violence Response Team at Grace Medical Center and Sinai Hospital.

Your generous financial support allows us to change the lives of the individuals and communities we serve through compassionate, high-quality care, community outreach and opportunities for innovation. We are honored that you trust us with your gifts. When you GIVE BRAVELY, you inspire us to CARE BRAVELY.

## Visionary

\$100,000 AND ABOVE

Abell Foundation

The Phyllis L. and Leonard J. Attman Foundation, Inc.

Baltimore Community Foundation

The Jacob and Hilda Blaustein Foundation

Dan and Gina Hirschhorn  
Jimena Martinez and Michael Hirschhorn  
Sarah and David Shapiro  
Debbie and Kenneth Vogelstein

Genine M. and Josh E. Fidler

Jill Fox Memorial Fund, Inc., a supporting foundation of The Associated: Jewish Community Federation of Baltimore, Inc.

France-Merrick Foundation

David and Barbara B. Hirschhorn Foundation

Dan and Gina Hirschhorn  
Jimena Martinez and Michael Hirschhorn  
Sarah and David Shapiro  
Debbie and Kenneth Vogelstein

In Memory of Isabelle L. Krieger by her daughters

The Richman Foundation

Shirley F. Scholder, Karen L. Scholder, Susan Scholder Smith and David M. Scholder

Aaron and Lillie Straus Foundation

Ellen W.P. Wasserman

The Harry and Jeanette Weinberg Foundation

West Baltimore Renaissance Foundation

## Cornerstone

\$25,000 – \$99,999

Paul M. Angell Family Foundation

Archdiocese of Baltimore

Herbert Bearman Foundation

The Charles Crane Family Foundation, Inc.

Everytown for Gun Safety Support Fund, Inc.

The Samuel G. & Margaret A. Gorn Foundation

The Stewart and Marlene Greenebaum Family Foundation  
Adele and Michael Greenebaum

Mandee and Steven Heint

The Zanyvl and Isabelle Krieger Fund

The Frank E. & Miriam Loveman Charitable Foundation

M&T Bank

MaxSent  
Todd Pattison

Morris A. Mechanic Foundation, Inc.

ProMD Health  
Scott Melamed

St. John's Western Run Church

StoryFarm

Leonard and Helen R. Stulman Charitable Foundation, Inc.

T. Rowe Price

Truist Financial

## Steward

\$10,000 – \$24,999

Anonymous

Arbor Dog Foundation

Buch Construction

Bunting Family Foundation

Canon Solutions America

Chesapeake Employers' Insurance Company

Renee and George Christoff

Lee E. Coplan

Jack & Phyllis Finkelstein Family Foundation

Ashley and Dan Flamholz

Goldseker Foundation

Golfers' Charitable Association

Iron Bow Technologies, LLC

Robert K. Jenner

David, Jessica, Kelsey, Joe and Charlye Krajewski

In Honor of Audrey & Arthur Levine by their sons Andrew, Michael & Charles Levine

In Honor of Audrey & Arthur Levine's grandchildren: Alexandra, Cameron, Danielle, Jessica, Jonathon, Madison, Samantha & Terry

McCormick & Company, Inc.  
Diane Levin

Merritt Properties

National Children's Alliance

Network Ninja

Laura Neuman

The Rite Aid Foundation

Liz Ritter and Larry Koppelman

Carole Rosenberg

Edward A. St. John Foundation

Mrs. Barbara K. Shapiro

Jamie Smith and Christian Merlo

Taylor Foundation, Inc.

Tides Center

Jeff Watson

Betsy and Howard Weiss

Thomas Wilson Foundation

## Advocate

\$1,000 – \$9,999

ACME Paper & Supply Co., Inc.

Rachel and Arthur Adler

Josh Adlin

ALH Foundation, Inc.

Janet Allan

Hirsh Ament

Andreas Apter

David Attman

Keith and Alissa Attman

Ronald and Stephanie Attman

Barcoding

Martin Bartness

Believe in Music, Inc.

Audrey Bergin

Stuart Blumenthal\*

Jonathan Bromberg and Barbara Scott

Brown Advisory, LLC

Mary Catherine Bunting

Kim Bushnell

The Campbell Foundation

CareFirst BlueCross BlueShield

Mary Beth and Craig Carmichael

Annie E. Casey Foundation

Bart and Beth Casper

Chesapeake Contracting Group

Golam Choudhury and Shabina Bahl

Coca-Cola Consolidated

Matthew and Rachel Cohen

Mr. and Mrs. William Cole

The Cole Foundation

Columbia National Real Estate Finance, LLC

Hilary and Clifford Corley

Dr. Jeff Cullen

Curio Wellness

Carmine D'Alessandro

Daignault Family Foundation

Jonathan and Robin Davidov

Davis, Agnor, Rapaport & Skalny, LLC

Jenny and Brian Deffaa

Emily and David Densky

Alissa and Lee Densky

Jackie Diehm and Jason White

Alex Dumitrescu

Eliasberg Family Foundation, Inc.

Enterprise Holdings Foundation

Exemplis



Michael A. Fine	Kelly & Associates Insurance Group	Nelson Coleman Jewelers
Kohli Flick	Kitchen Saver	Katryn Norman
Ms. Lindsey Foster	Amy Kolev	Number Ten Foundation
Mary Francioli	Joseph Koons	Maria Oesterreicher
Carrie and Truman Freshour	Marianna LaCanfora	Cathy and Kevin Pascale
Beth and Rob Furlong	Avendui Lacovara	Robert Penn
FutureCare Health & Management Corp.	Wendy Lane	Drew Persons
Gallagher, Evelius & Jones, LLP	Jacqueline Langdon and Jennifer Fritsch	Brigid Peterson
Dr. Marc H. and Nancy Gertner	Rene LaVigne	Lisa M. Polinsky
Drew Glasgow	Misty Letts	Andrew N. Pollak, M.D.
Beth H. Goldsmith	London Eligibility, Inc. Lisa and Scott London	Raymond James & Associates
Heather Greenebaum	Paul Lynch	RCM&D
Ben Greenwald	Carolyn and Michael Maloney	Leslie and Thomas Ries
Kerry Hannan	Maryland Bar Foundation	River Road Unitarian Universalist Congregation
Har Sinai - Oheb Shalom Congregation	Maryland State Bar Association, Inc.	The Nora Roberts Foundation
Jonathan and Jayne Havens	Ellen and Neil Meltzer Family Fund	Sharri and Greg Rochlin
Kellie Hawkins	Joseph and Harvey Meyerhoff Family Charitable Funds	Scott Romanoff
Senator Shelly and Mr. Jeffrey Hettleman	Miles & Stockbridge, P.C. Sandra and Brian Moffet	Carlos and Kathy Rosa
Ebony Jackson	Elizabeth and William Minkin	Jennifer and Adam Rosenberg
Ms. Mary Jo Jordan and Dr. William Bandy	Lauren and Arsh Mirmiran	The Rosenblatt Group of Academy Mortgage
Jessica P. Kahn	MOI, Inc.	Meggan and Mike Saulo
Kappa Guild	LaDonna and John Morgan	Dara Schnee
Dr. and Mrs. Mark R. Katlic	Martha D. Nathanson	Terri Schreffler Anavitarte
Jane Keith	National Lumber Co.	Barbara and Thomas Schweizer, Jr.
		Laura and Mark Scott

Helen Shafer	Anirban Basu	Diane Hawkins
Sandy and Kathy Shapiro	Barbara Bond	Mark and Sharon Hendricks
Jill and Mark Simanowith	Sandra Boughan	Barak Hermann
Brian Singer	Donald Bousel	Josh Hershkovitz
The Paul & Emily Singer Family Foundation	Laura Callahan	Jessica Hopkins
SOS Technology Group Randi and Harel Turkel	Megan Campbell	Kathryn Hummel
Robyn Talesnik	Robin Cobb	Susan and Michael Hunter
Justin Tucker	Jamie and Marc Cohen	Kathleen Hutzell
Venable, LLP Abigail and Robert A. Hoffman, Esq.	Madeline Comoglio	Halla Ingvarsdottir
Judy L. Waltz, R.N.	Peggy and Yancey Costas	Andrew Kadish
David Warshaw	Jonathan D. Dubin, M.D.	Ann H. Kahan
Wee Chic	Michael Dunty	Jodi Kielman
Anne Wilson	Mike and Sue Fiorino	Carl D. Kilhoffer
LeeAnne Woods	The Footlick Family Foundation Robert* & Ronnie Footlick Leslie & Joseph Schaller Randi & Frank Settleman	Mark and Alissa Kligman
Jonathan and Marni Yoffe	Gina Foringer	John Knapp
Barbara and David Zerivitz, P.A.	Sean Gamber	Janelle Kraut
	Laura E. Geissler	Jessica Landers Hopkins
	Dan and Casey Gerlach	Amy and Jack Lebowitz
	Lori Gerstley	Matt Lenihan
	Jackie Gifford	Diane Levy
	Mark and Liz Goldstein	Julianne Mackenzie
	Julia Greninger	Scott Marder
	Chen Gu	Julian McMichael
	Frederick and Stacey Guckes	Lori McPherson
	Thomas Haj	Kate Melito
		Anne and Richard Meltzer

**Benefactor**  
\$500 - \$999

Shahla Adam  
Jessica Alperstein  
Linda Anders  
Susan Ball-Leon  
Mr. Jason Barker

MileOneCares Fund  
 Janese and Brian Murray  
 Kelli Nemer  
 Rob O'Connor and Lisa Brozowicz  
 Hunter Piel  
 Pam and Rob Platt  
 Hayley Porter  
 William Regan  
 Renaissance Charitable Foundation, Inc.  
 Mark and Stephani Renbaum  
 Regina Richardson  
 Peter Rigler  
 Tom Rizza  
 James Roberge  
 Beth and Peter Rosenwald  
 St. Thomas Aquinas Church  
 Olivia Schnitzer  
 Jennie Faber Schwartz, M.D. and Jonathan Schwartz  
 John and Sarah Sherman  
 Peter Sklar  
 Susan Sterett  
 Bridgette Stumpf  
 Lisa Taylor  
 Betsey and David Todd  
 Urmi Trivedi

Ms. Lois Tuttle  
 Vidanyx  
 Jason Vodzak  
 Jennifer Weeks  
 Mr. James Whalen  
 Christopher and Jessica White  
 Rex Wilkes  
 Kimberly Wynn  
 Jacqueline Ziegler  
 Lowell Zollicoffer

**Sustainer**  
 \$100 – \$499

Anonymous  
 Lola Abt-Hahn and Joseph Hahn  
 Ira Ackerman  
 Matthew Akman  
 Paul Alecce  
 David Antwerpen  
 Arbutus United Methodist Church  
 Emily Aronson  
 Andy Attman  
 James Baldwin  
 Anita and Anthony Balestino  
 Shannon Ballard  
 Meghan Bandelin

Matt Barnes  
 Shaina Barnes  
 Skyla Barnett  
 Crimson Barocca and Teresa Vlahovich  
 Kellie Barr  
 Rick Barth and Nancy Dickinson  
 Stacey Beck  
 Kevin Begley  
 Jennifer Beschorner  
 Beth Tfiloh Lower School  
 Lara and Robert Biagiotti  
 Chris Block  
 Erica Bloom  
 Jill Bloom  
 Elizabeth Blumenfeld  
 Lisa Bodiford  
 Daniel Bollinger  
 Elizabeth Borris  
 Sharon Boston  
 Sara Bounds  
 Chad Brady  
 Ethel and William Braverman  
 Ms. Linda E. Bresnock  
 Tracye Brewer  
 Star Briscoe  
 Annika Brown

Michael and Susan Brown  
 Paul and Lisa Budlow  
 Judith and Robert Bukala  
 Phyllis Bull  
 Molly Burger  
 Maggy Burgess  
 Elizabeth Cadwalader and Eugene Baron  
 Judith L. Carmichael  
 Mr. and Mrs. James E. Carmody  
 Mia Carr  
 Donna Case  
 Jack and Cynthia Cavanaugh  
 James and Ericka Chambers  
 Chesapeake Contemporary Dentistry  
 Amanda Chittum  
 Lanae Christian  
 Patricia Clarke-Black  
 Marian Clouse  
 Jennifer Cohen  
 Julie Cohen  
 Susan Cole  
 Tara Connell  
 Melissa Coombs  
 Pat and Tom Cronin  
 Matthew Crowder  
 David Crowley

Alison and Carmine D'Alessandro  
 Jon and Geannie Darby  
 Ceasar Datu  
 Mrs. Rita Davidson Spiker  
 Lisa Decker  
 Cameron and Meara Denton  
 Brittany Doster  
 Mallory Doughty  
 Mary and Bernard Duffy  
 April Dunbar  
 Robinita Edmonds-Hill  
 Sarah Elfreth  
 Saralyn and Jeffrey Elkin  
 Sean Evans  
 Hannah Feeney  
 Troy Ferguson  
 Jill and Dean Fiergang, M.D.  
 Deborah Filling  
 Willie Fistergash  
 Karen Floyd  
 Graham Fowler  
 Teresa Francois  
 Rachel Franz  
 Brian Furr  
 Michelle and William Golberg  
 Cyndi and Shari Golden-Ray

Lauren Gordon  
 James Grande  
 Karl Greninger  
 Jackie Griffin  
 Lillian Grybauskas  
 The Abigail Gutstein Charitable Fund  
 Frieda and Robert Hallock  
 Thomas Halloran  
 Mr. and Mrs. Raymond L. Hamilton  
 Anne Hansen  
 Leona Harper  
 Rosheda Harrell  
 Ms. Rebecca Harris  
 Sherman Harris  
 Aaron Haslinger  
 Kharen Hauck  
 Lucy Haus  
 Matt Hecht  
 LaShannon Henry  
 Cory Hermann  
 Lena Hershkovitz  
 Fred and Tammy Heyman  
 Tanya Hines  
 Marc and Faith Hirschbein  
 Grant Hoffman  
 William Holzman

Douglas Horensky  
Diane Horton  
John Hutch  
Diane and Warren Israel, M.D.  
Jesse Jachman  
Kelly and Ed Joffe  
Shamia Johnson  
Kimberly Jolson  
Freedom Jones  
Barbara Judd  
Lisa Junker  
Edward Kaitz  
David Katz  
Jodi and Jeffrey Keehn  
Cara Kelly  
Kevin Kelly  
Carolyn Kelly-Greene  
Zeita M. Kemp  
Dorothy Kief  
Ms. Danielle King  
Keith Kobin  
Adam Michael Kodeck Fund  
Shyam Kottlil  
Sherri Kronthal  
Elizabeth Krug  
Mr. Bradley E. Kurland and  
Mr. Robert Daniels

John and Andrea Lattizori  
Steve Laugtug  
Josh Lauren  
Laura and Noah Lechtzin  
Mark and Heidi Leenay  
Karen and Justin Leggett  
Valene Lemon  
Matthew Lengel  
Teri K. Leonovich  
Mr. and Mrs. Mark Levin  
Cheri Levin  
Jennifer Levine  
Mr. Joseph Lexa  
Leslie Lichtenberg  
Carole Louis  
Garrett Lucas  
Mr. and Mrs. John E. Luke  
Danni Lyles  
Mr. Jordan Lytle  
M. L. Lichtenberg & Associates, LLC  
William Macsherry  
Melissa Maddox  
Ms. Helen Marcus  
Dr. Frank C. Marino Foundation, Inc.  
Greg Marsh  
Mr. and Mrs. John R. Matteson

Shannon McCullough  
Stephanie McDonald  
Carol McNutt  
Juanita Meadowcroft  
Kelly Meltzer  
Mr. Daniel Meyer  
MICA – Maryland Institute  
College of Art  
Lindsay Miller  
Loraine Miscavage  
Rachel Mogilevsky  
Mikey Monaghan  
Colleen Moore  
Michelle Moore  
Christopher Mudd  
Sarah Murthi  
Reni Myers  
Shelley and Michael Myers  
Lisa Nochumowitz  
Nicholas Nutting  
Melissa Oddo  
Velda Oglesby  
Deborah and Jeffrey Orkin  
Joshua Patel  
Giselle Pelaez  
April Perry  
George Petrides, Jr.

Katie Pettersen  
Pimlico Merchants Association  
Larry Plant  
Lisa Poland  
Suellen Poland and Barry Smith  
Jason Potter  
Melanie Prince  
Trina Ramsey  
Denielle Maria Randall  
RBC Foundation  
Tom Reese  
Dr. Jerome P. and Susan B.  
Reichmister  
Lauren Relf  
Stacey Rendelman Thompson  
Catherine Rentz  
Mrs. Dorla Richardson  
Art Richer  
Mary Ricketts  
Heidi Rico  
Joyce Rigsby  
Charles Ritz  
Crystal Roberts  
Diane Robinson  
Emma Romero Holloway  
Hyla and David Rosenberg  
Ricki Rutley

Henry Sage  
Heather Sand  
Kiran Sandhu  
Ann Saunders  
Lisa Schatz  
Mrs. Amanda Schieber  
Diane Schultz  
Ingrid Serga  
Julie Sessa  
Zack Shankman  
Mr. and Mrs. James Shoultz  
Marc and Patricia Siegelbaum  
Sophia Silbergeld  
Clevonne Simmons  
Joel L. Simon and Debra A. Gordon  
Julie Singer  
Gayle Smith  
Jill Smith  
Dana Snyder  
Howard Sobkov  
Sol Spivack  
Sharon Steiner  
Ms. Tracey D. Stinney  
Roberta Strickler and  
David Meyers, M.D.  
Robert Stryker  
Wesley Stryker

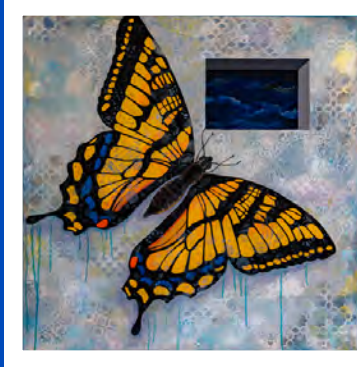
Jamie Suthard  
Janis Swain  
Bethann Talbot  
Kinekal Tasew  
Amy Tate  
Ms. Jean Teal  
Wendy Toussaint  
Truth Athletics  
Laken and Joseph Tychostup  
Catherine Van Ogtrop  
Ms. Patti VanDam  
Kathleen Vogel  
Mary Amelia Walker  
Shani Walter  
Edward Walton  
Annette Watkins-Harris  
Karen Watsic  
Nissa Weinberg  
Elizabeth and Jason Weiner  
Sarah Weiskittel  
April White  
Maria White  
J T Whiteley  
Dr. Valerie Wilder  
Theodore Wilhite  
Sarah Wilson

Tara Wingrat  
Jade Wong  
Shannon B. Wood  
Rhonda Wyskiel  
Susan and Barry Yaffe  
David Yoffe  
Bradley Zimmer

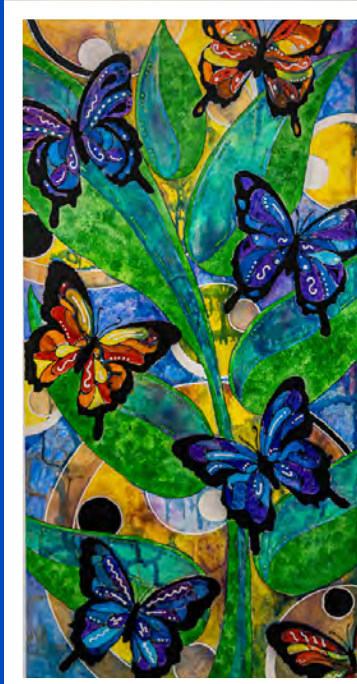
## In-Kind Supporter

Reva Chopra  
Carol Cutts  
The Howard Hughes Corporation  
Kevin McNeil

*\*Deceased*



**Into the Night**  
by Bennett Cummings

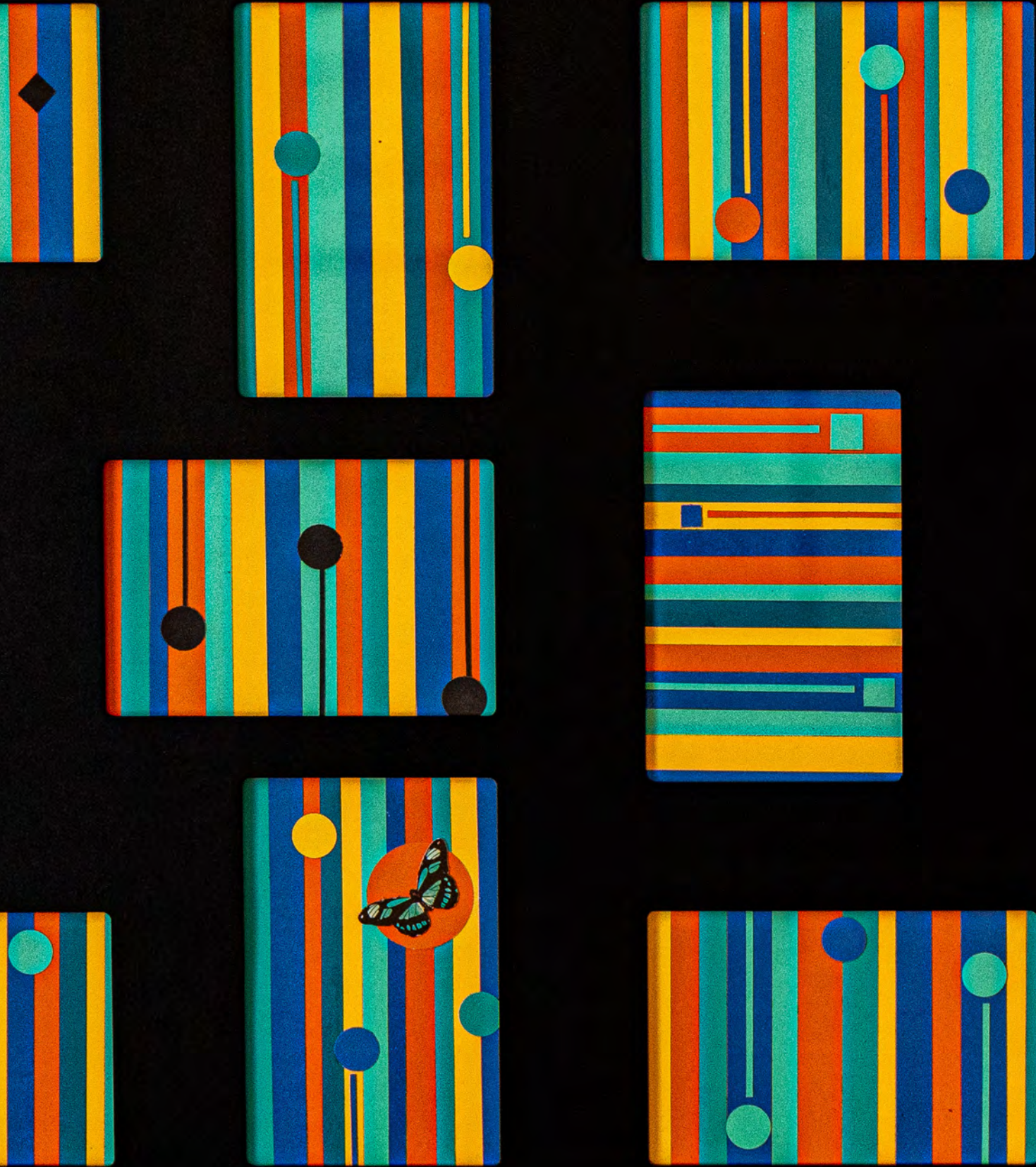


**Butterflies**  
by Lisa Kerschner

“Butterflies’ reflects feelings of freedom and returning colors after a period of uncertainty in my personal growth. I was ready to fly towards my new found goals ... finally breaking through the dark”



Cover images:  
**Stripes of Hope** by Leslie Landsman



A LIFEBRIDGE HEALTH GROUP

**CENTER FOR HOPE**

5400 Preakness Way, Baltimore, MD 21215



@lifebridgecenterforhope



@LBHCenterForHope



@lifebridgecenterforhope



lbhcenterforhope

410-601-HOPE (4673) • [lifebridgehealth.org/centerforhope](http://lifebridgehealth.org/centerforhope)